

EPIDEMIOLOGICAL SITUATION COVID-19, Nepal

Week 20 (10 May – 16 May 2020)
13 May 2020 T12:00:00

Overview - Week 19

- Total confirmed Covid-19 Cases : 217; Deaths: 0
- Total district affected: 18/77
- Total province affected: 6/7
- Number of province/district with cases this week: 3 provinces/11 districts
- Number of newly affected province/district this week: No new province/ 5 new districts
- Number of confirmed cases this week: 107

Province 1:

2 Cases from Bhaktapur, 1 Case from Kathmandu

Province 2:

57 from Parsa, 2 from Dhanusha, 2 from Mahottari,
1 each from Bara, Saptari and Sarlahi

Province 5:

1 case from Bardiya, 15 cases from Rupandehi, 24 Case from Kapilvastu

Note: Week runs from Sunday till Saturday . (based on reported date)

- All data are provisional
- Data updated till 12 May 2020 Time 17:00:00

Summary of laboratory-confirmed COVID-19 cases, deaths and transmission by province

Transmission classification based on [WHO definitions](#)

Reporting Province	Total confirmed cumulative cases	Total cumulative deaths	Transmission classification*	Number of districts affected	Date of last case#
Province 1	35	-	Cluster of cases	3	06-May-2020
Province 2	95	-	Cluster of cases	7	12-May-2020
Bagmati	10	-	Sporadic cases	4	12-May-2020
Gandaki	2	-	Sporadic cases	1	30-Mar-2020
Province 5	70	-	Cluster of cases	4	11-May-2020
Karnali		-	No cases		
Sudurpaschim	5	-	Sporadic cases	2	07-Apr-2020
National Total	217	-		21	12-May-2020

- Date of last case is the date of onset or date of sample collection or date of lab report based on information available.

*Case classification is based on [WHO transmission classification](#)

No cases- provinces with no cases

Sporadic cases- provinces with one or more cases, imported or locally detected

Cluster of cases- provinces experiencing cases, clustered in time, geographic location and/or by common exposures

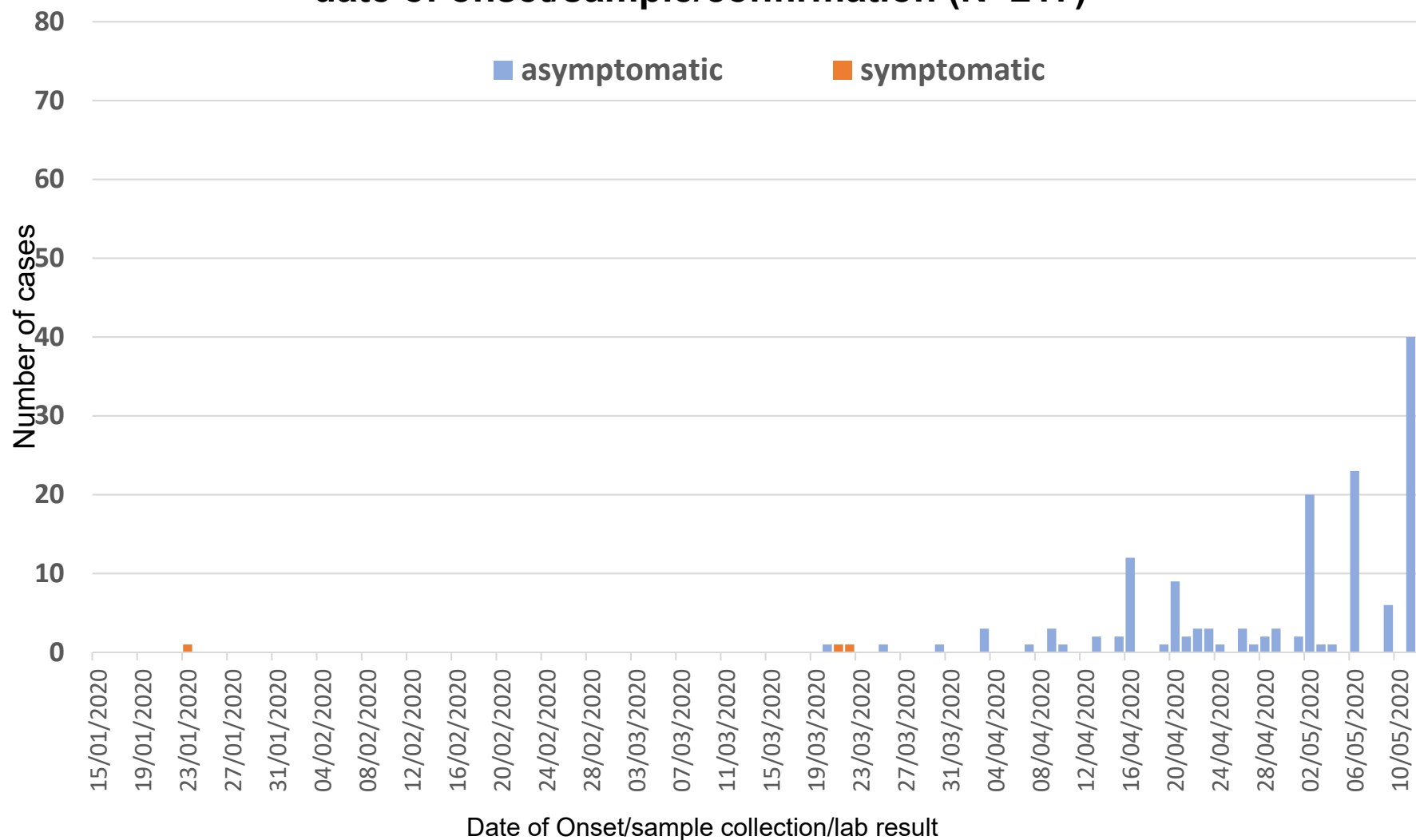
Community transmission- experiencing larger outbreaks of local transmission defined through an assessment of factors including, but not limited to:

- Large numbers of cases not linkable to transmission chains
- Large numbers of cases from sentinel lab surveillance
- Multiple unrelated clusters in several areas of the country/territory/area

- All data are provisional
- Data updated till 12 May 2020 Time 17:00:00

Time distribution

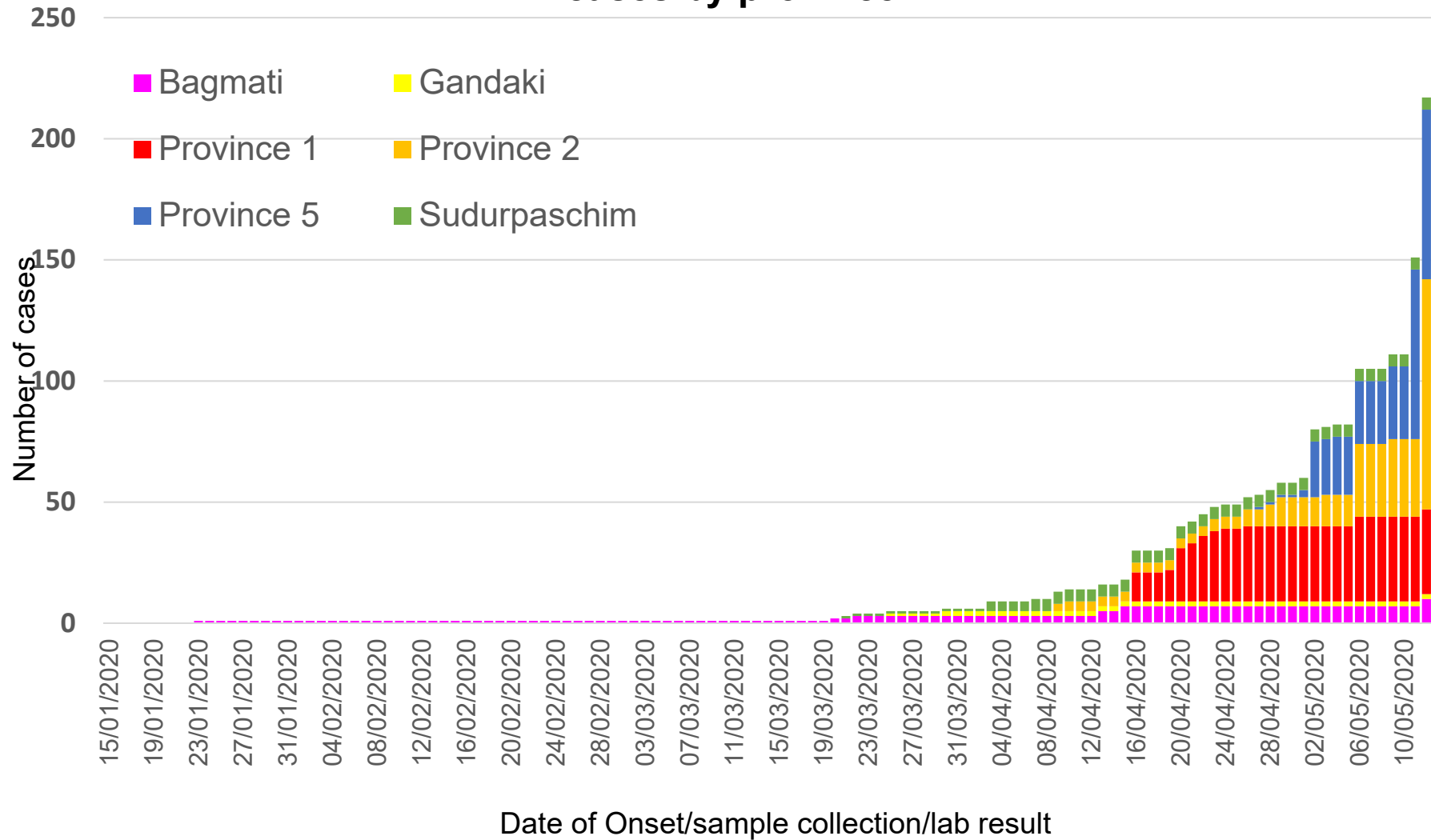
Epidemic curve of laboratory confirmed COVID-19 cases, by date of onset/sample/confirmation (N=217)



Note: The first case was developed symptoms on 31 Dec 2019 in China and was confirmed on 23 Jan 2020. Reference dates used in order of preference as available – Date onset/Date of sample collection/Date of confirmation.

- All data are provisional
- Data updated till 12 May 2020 Time 17:00:00

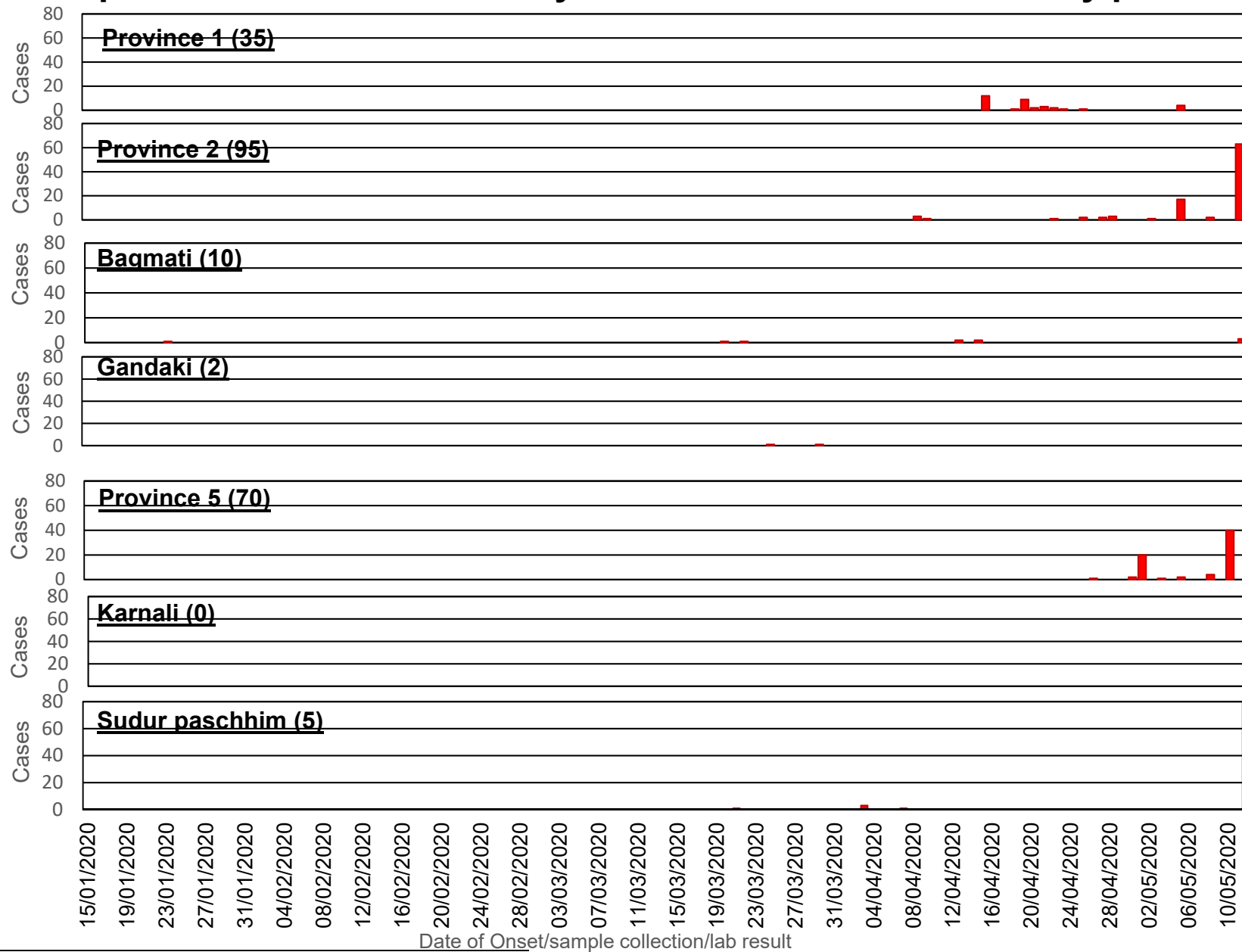
Cumulative case count of laboratory confirmed COVID-19 cases by province



Note: The first case was developed symptoms on 31 Dec 2019 in China and was confirmed on 23 Jan 2020. Reference dates used in order of preference as available – Date onset/Date of sample collection/Date of confirmation.

- All data are provisional
- Data updated till 12 May 2020 Time 17:00:00

Epidemic curve of laboratory confirmed COVID-19 cases by province



- All data are provisional
- Data updated till 12 May 2020 Time 17:00:00

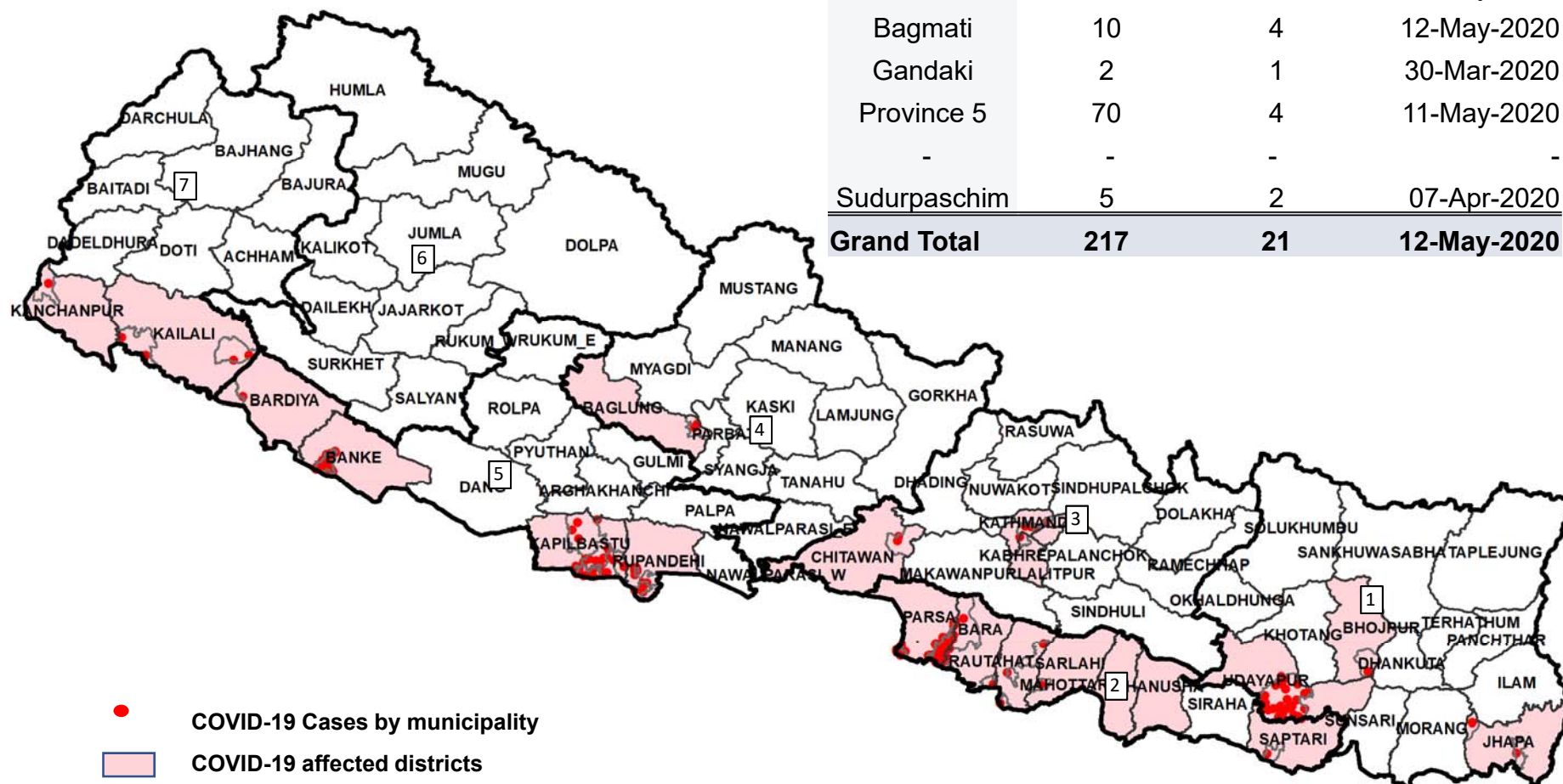
Note: The first case was contracted infection in December when he was in China.

Place distribution

Municipalities (By domicile) with reported laboratory confirmed COVID-19 cases

Number of affected districts = 21

Provinces	Total confirmed cases	Total district affected	Date of last case#
Province 1	35	3	06-May-2020
Province 2	95	7	12-May-2020
Bagmati	10	4	12-May-2020
Gandaki	2	1	30-Mar-2020
Province 5	70	4	11-May-2020
-	-	-	-
Sudurpaschim	5	2	07-Apr-2020
Grand Total	217	21	12-May-2020



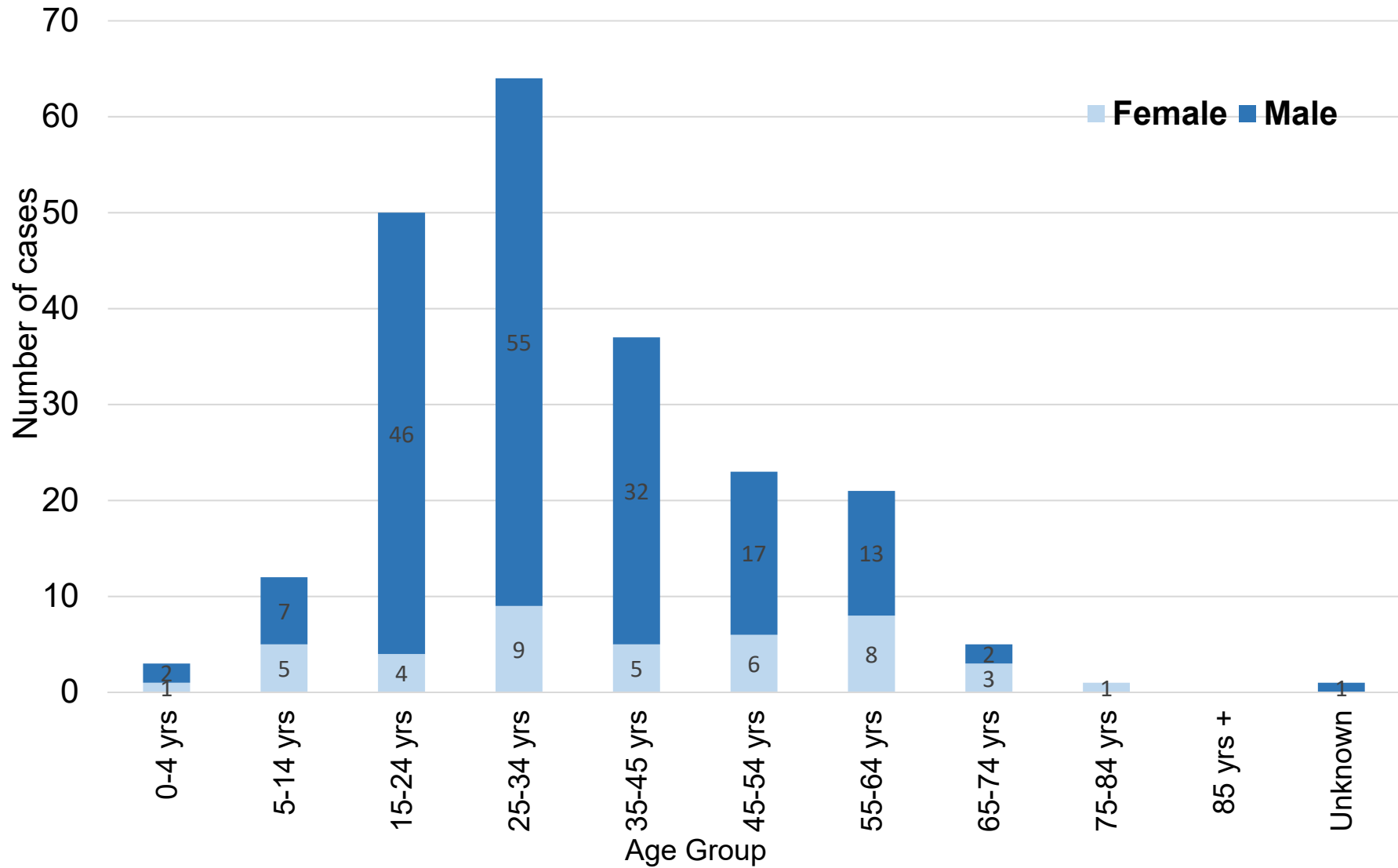
1 dot = 1 case (dot placed randomly within municipal boundary)

Municipalities (17 – Parsa, 2 Dhanusha, 2 Bhaktapur, 1 Kathmandu, 2 Mahottari) level are not available. Only districts are shown.

- All data are provisional
- Data updated till 12 May 2020 Time 17:00:00

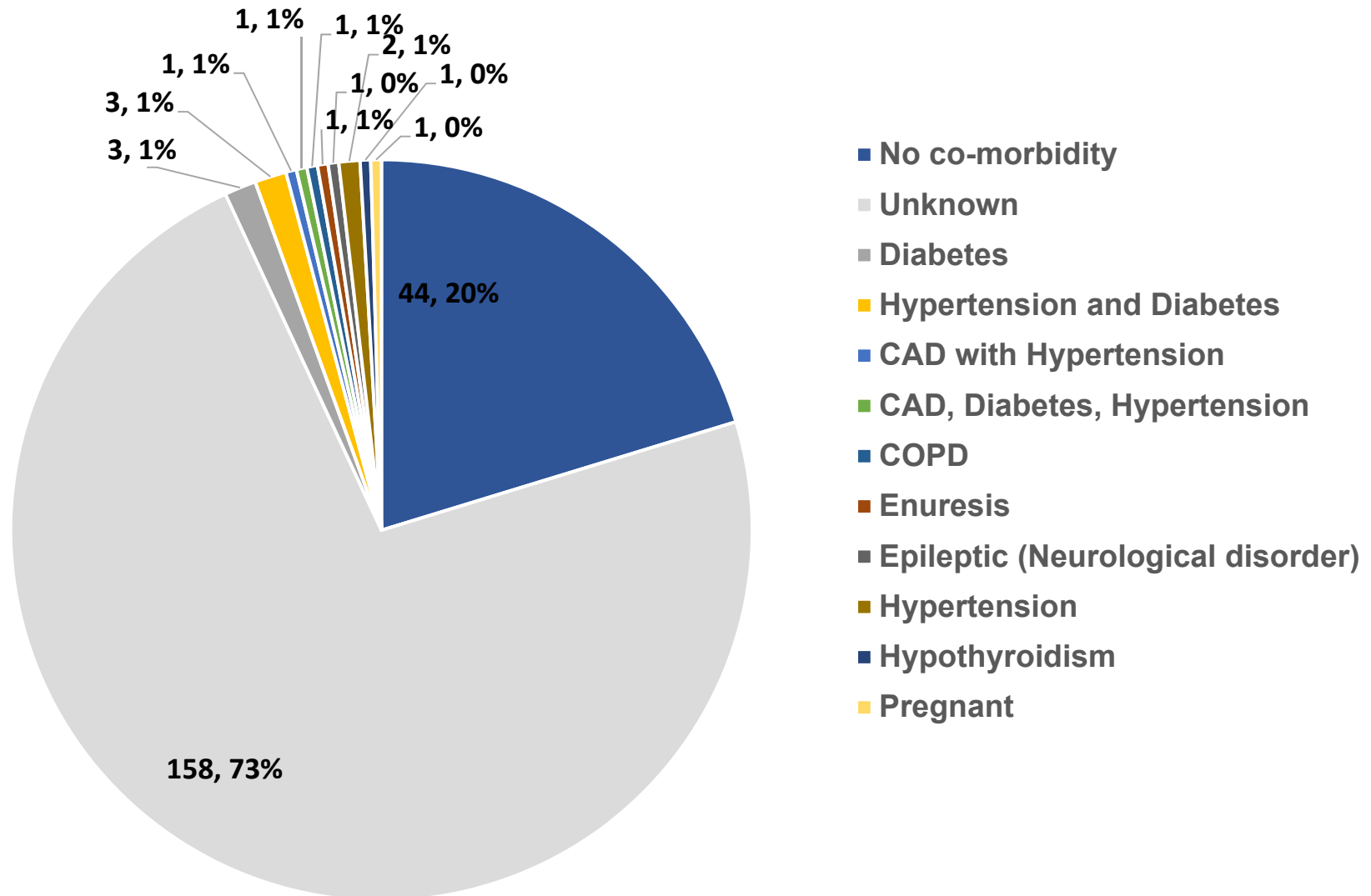
Person distribution

Distribution of COVID-19 cases by age and sex (N=217)



- All data are provisional
- Data updated till 12 May 2020 Time 17:00:00

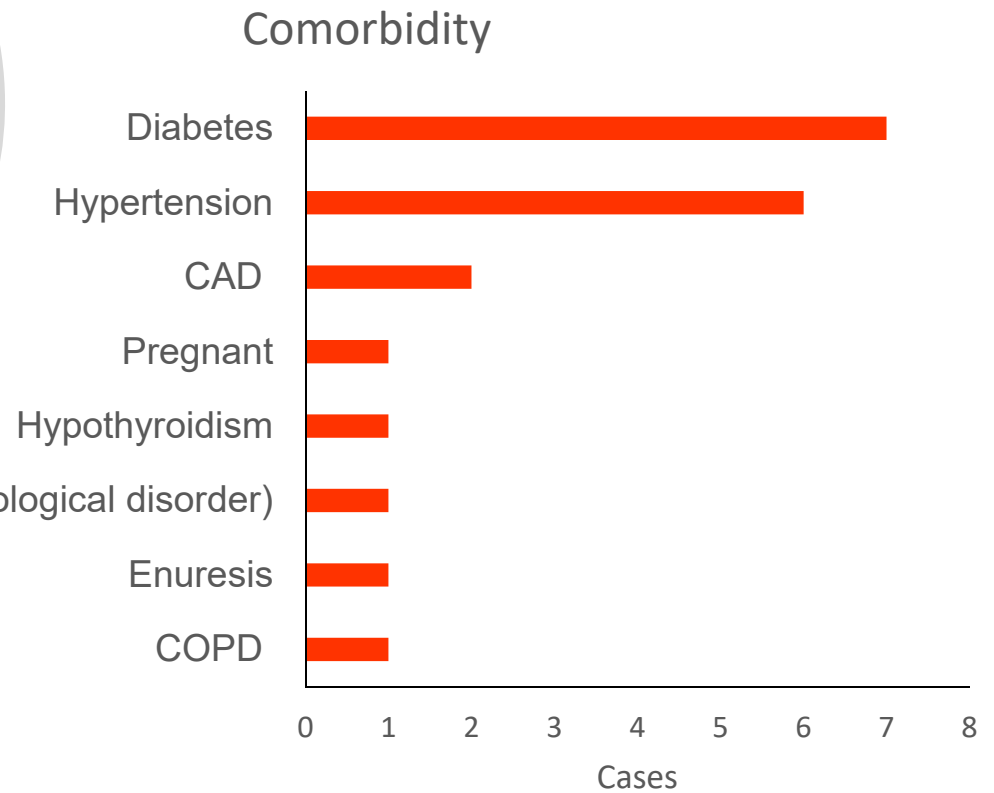
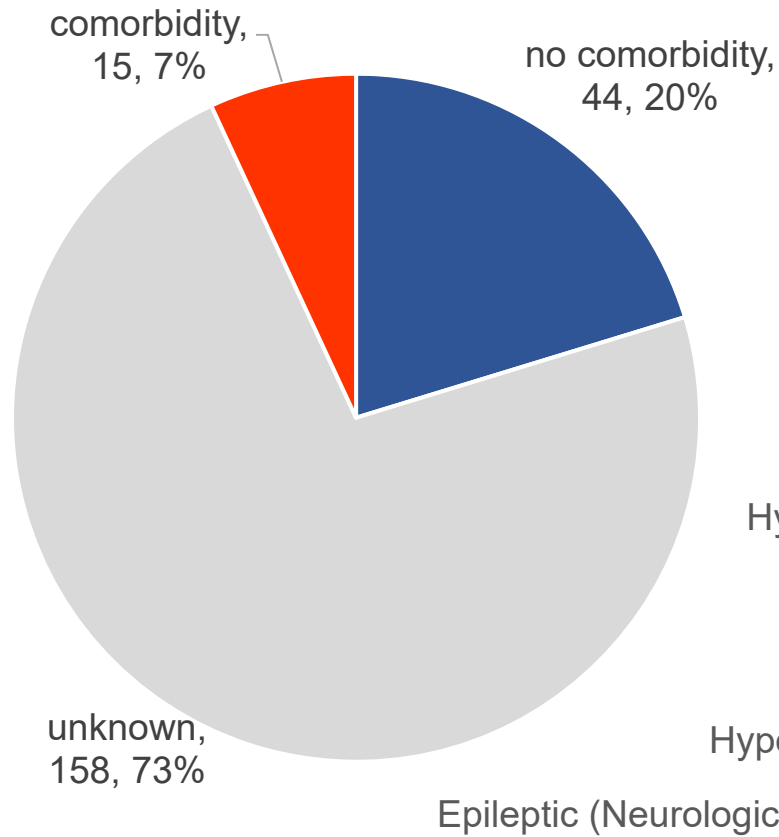
Co-morbidity of COVID-19 cases in Nepal (N=217)



*Unknown as most recent of cases are currently under investigation.

- All data are provisional
- Data updated till 12 May 2020 Time 17:00:00

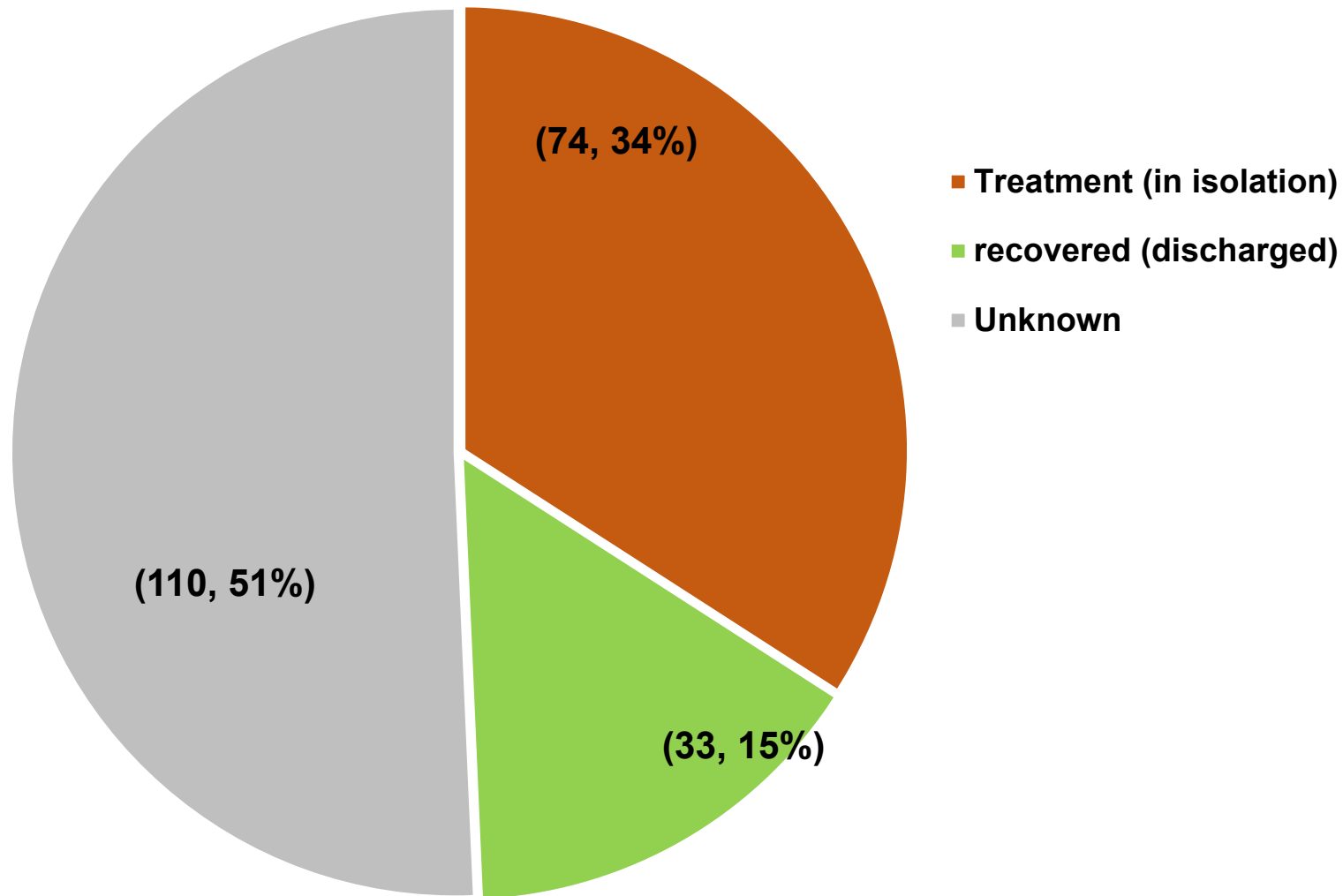
Co-morbidity of COVID-19 cases in Nepal (N=217)



Some cases are with more than one comorbidity. Unknown as most recent of cases are currently under investigation

- All data are provisional
- Data updated till 12 May 2020 Time 17:00:00

Recovery status of COVID-19 cases in Nepal (N=217)



No death reported among the confirmed cases. Recovery status not known were recently confirmed cases.

- All data are provisional
- Data updated till 12 May 2020 Time 17:00:00